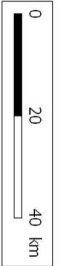
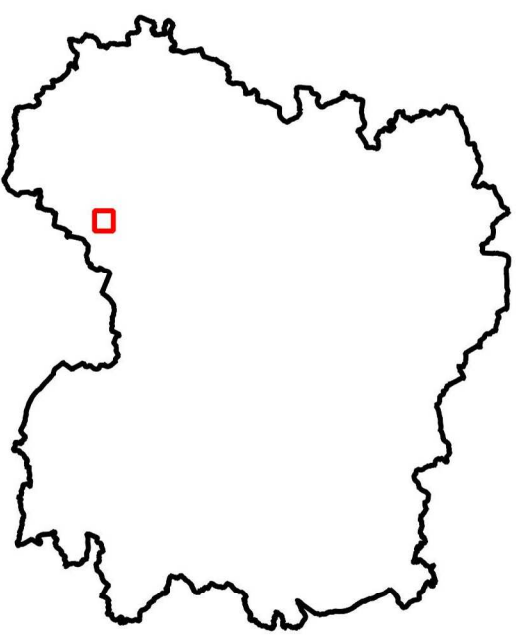






SAS BRIFFONTAINES

PEDOLOGIE



Légende :

-  11 Sol peu évolué calcaire sur colluvions
-  21 Rendzine grise sur craie
-  22 Rendzine grise sur craie à poches
-  27 Rendzine brune sur graveluche



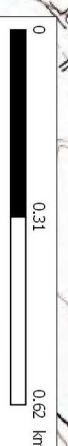
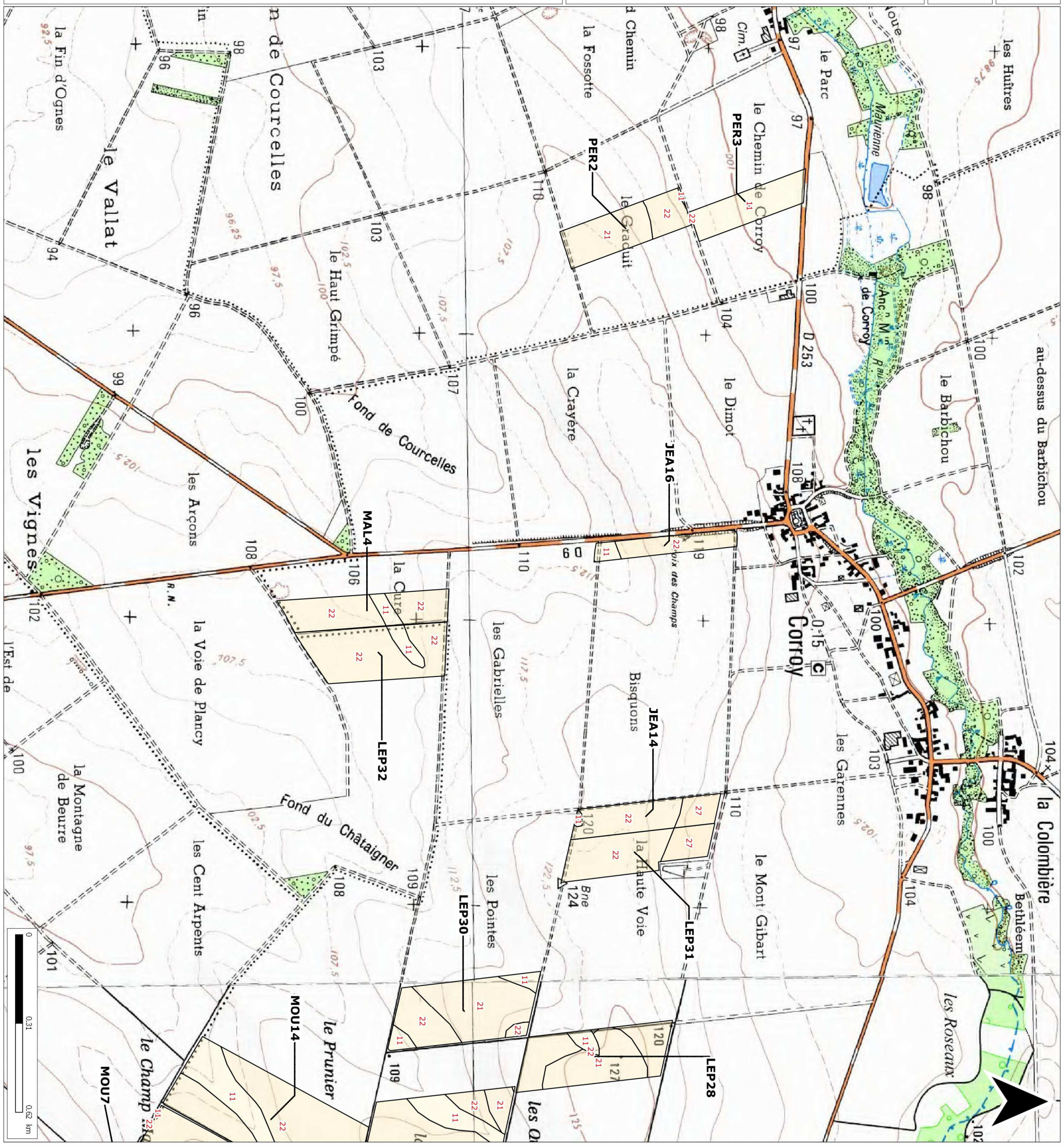
Source : IGN Scan 25 2013

Dossier :

S:\Cartes MapInfo\Etude collaborateurs\Etude François\SAS Briffontaines

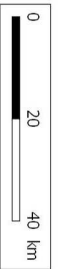
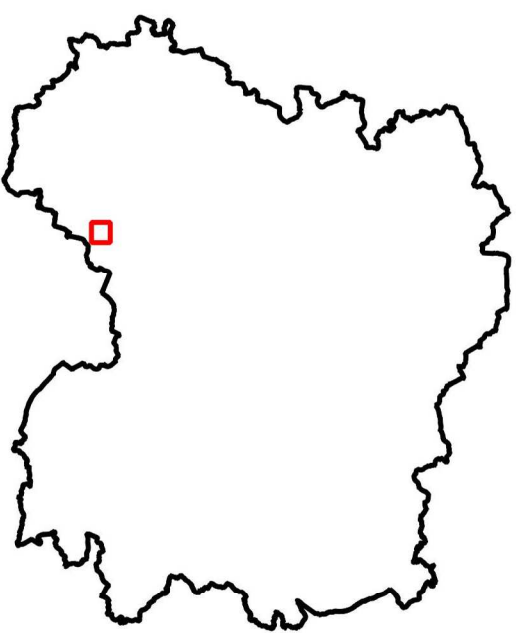
Référent : brissonj51d

Date : 13.06.2019







SAS BRIFFONTAINES

PEDOLOGIE



Légende :

-  11 Sol peu évolué calcaire sur colluvions
-  21 Rendzine grise sur craie
-  22 Rendzine grise sur craie à poches
-  27 Rendzine brune sur graveluche



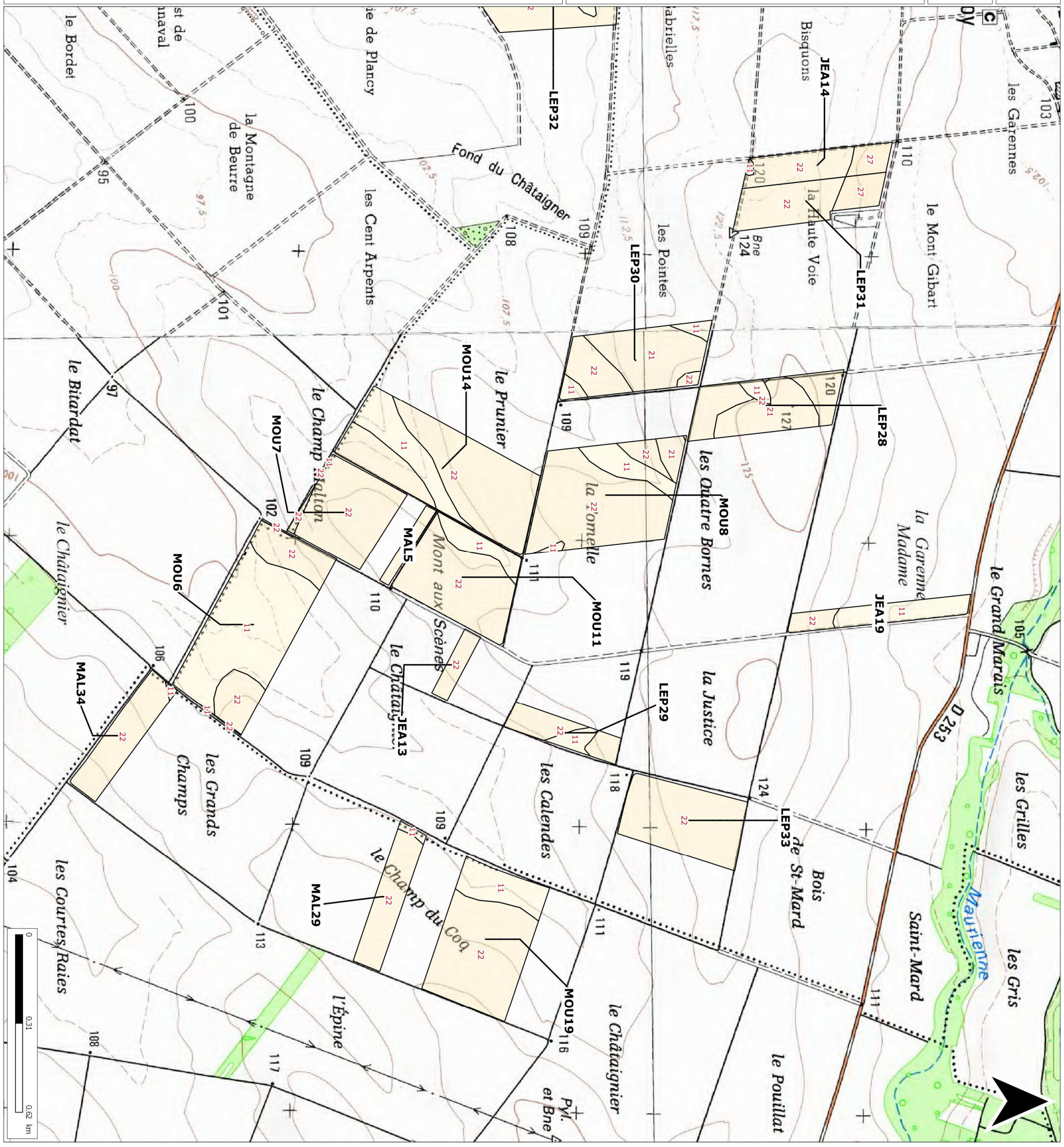
Source : IGN Scan 25 2013

Dossier :

S:\Cartes MapInfo\Etude collaborateurs\Etude Francois\SAS Briffontaines

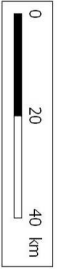
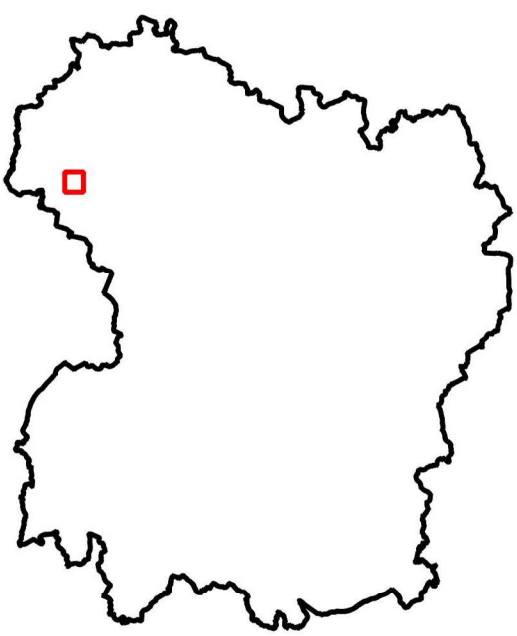
Référent : brissonj51d

Date : 13.06.2019



SAS BRIFFONTAINES

PEDOLOGIE



Légende :

- 11 Sol peu évolué calcaire sur colluvions
- 21 Rendzine grise sur craie
- 23 Rendzine brune sur craie à poches

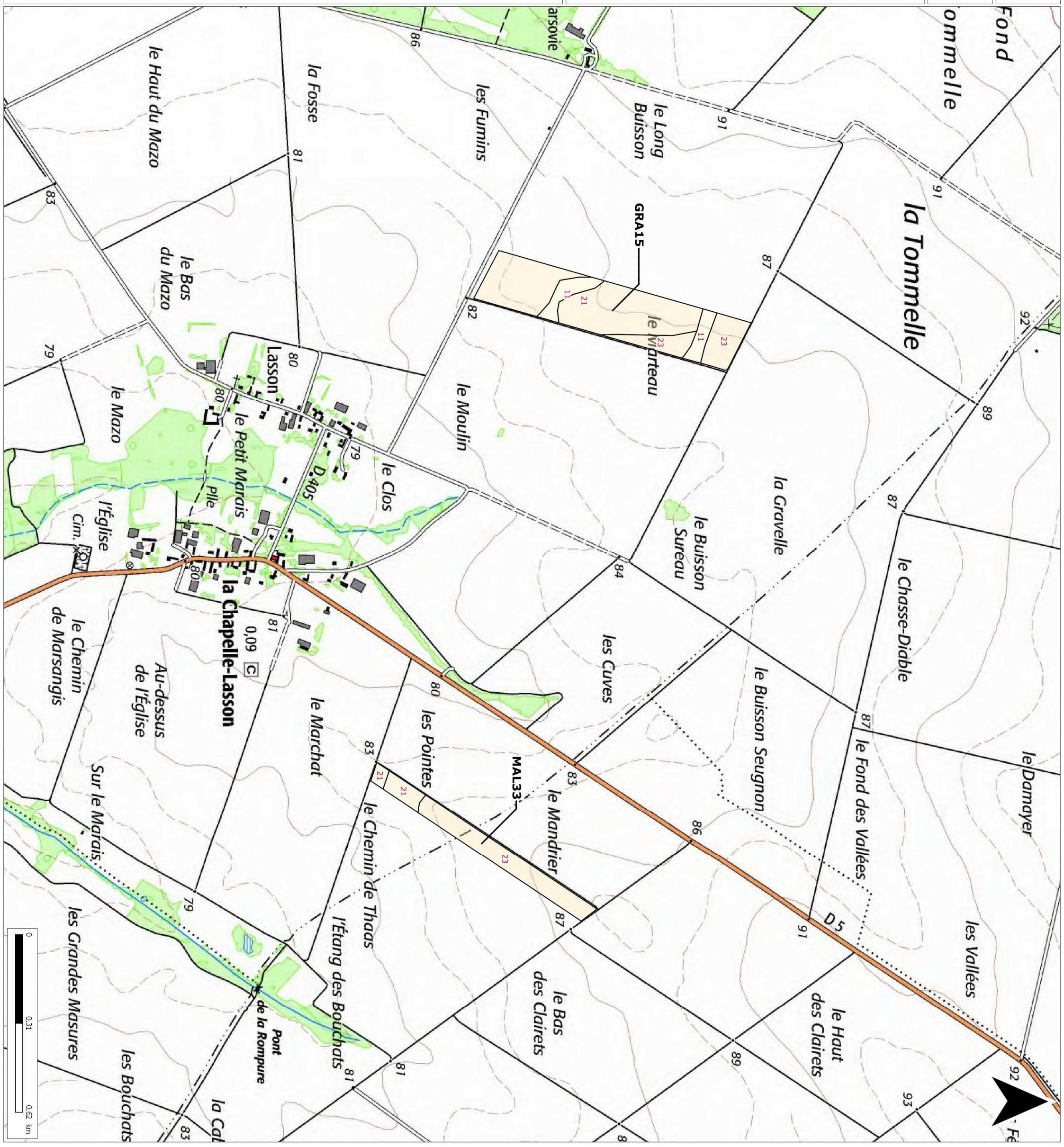


Source : IGN Scan 25 2013

Dossier :
S:\Cartes MapInfo\Etude collaborateurs\Etude Francois\SAS
Briffontaines

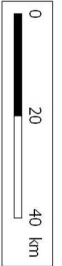
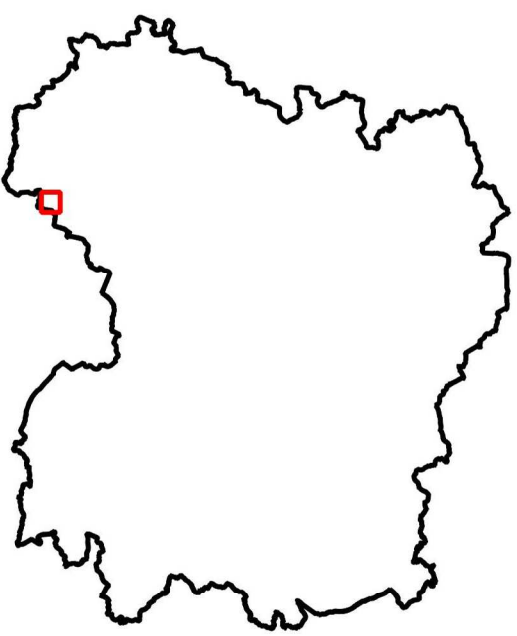
Référent : brissonj51d

Date : 13.06.2019



SAS BRIFFONTAINES

PEDOLOGIE



Légende :

- 11 Sol peu évolué calcaire sur colluvions
- 21 Rendzine grise sur craie
- 23 Rendzine brune sur craie à poches
- 28 Rendzine brune sur terrasse graveleuse



Source : IGN Scan 25 2013

Dossier :
S:\Cartes MapInfo\Etude collaborateurs\Etude François\SAS
Briffontaines

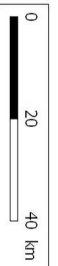
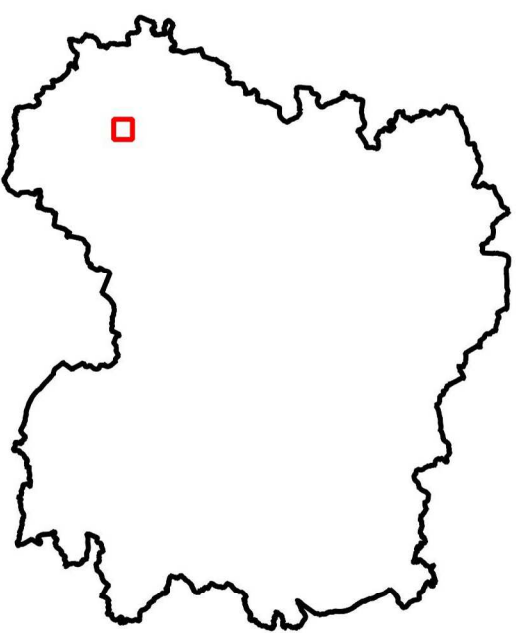
Référent : brissonj51d

Date : 13.06.2019



SAS BRIFFONTAINES

PEDOLOGIE



Légende :

- 71 Sol dégradé hydromorphe sur limon éolien
- 72 Sol dégradé hydromorphe tronqué sur limon éolien



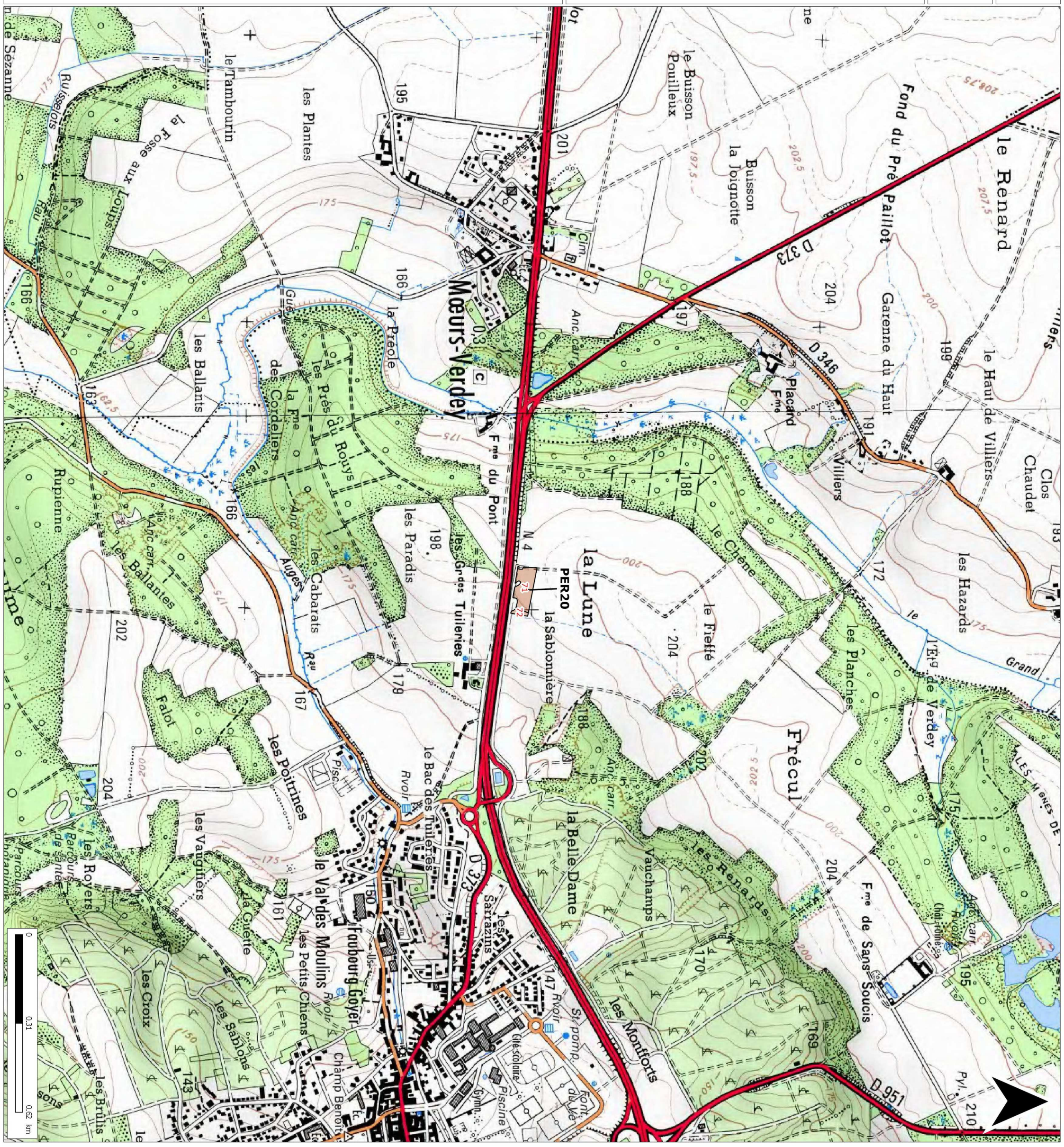
Source : IGN Scan 25 2013

Dossier :

S:\Cartes MapInfo\Etude collaborateurs\Etude Francois\SAS Briffontaines

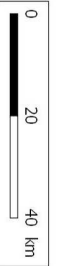
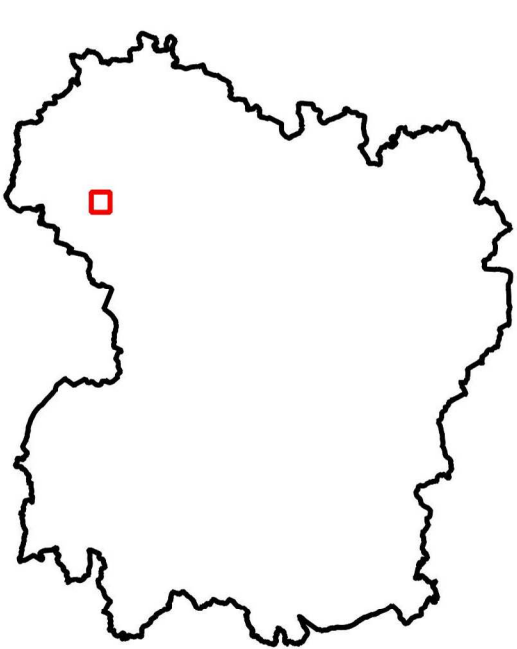
Référent : brissonj51d

Date : 13.06.2019


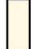
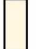


SAS BRIFFONTAINES

PEDOLOGIE



Légende :

-  11 Sol peu évoluée calcaire sur colluvions
-  21 Rendzine grise sur craie
-  23 Rendzine brune sur craie à poches



Source : IGN Scan 25 2013

Dossier :
S:\Cartes MapInfo\Etude collaborateurs\Etude Francois\SAS
Briffontaines

Référent : brissonj51d

Date : 13.06.2019

